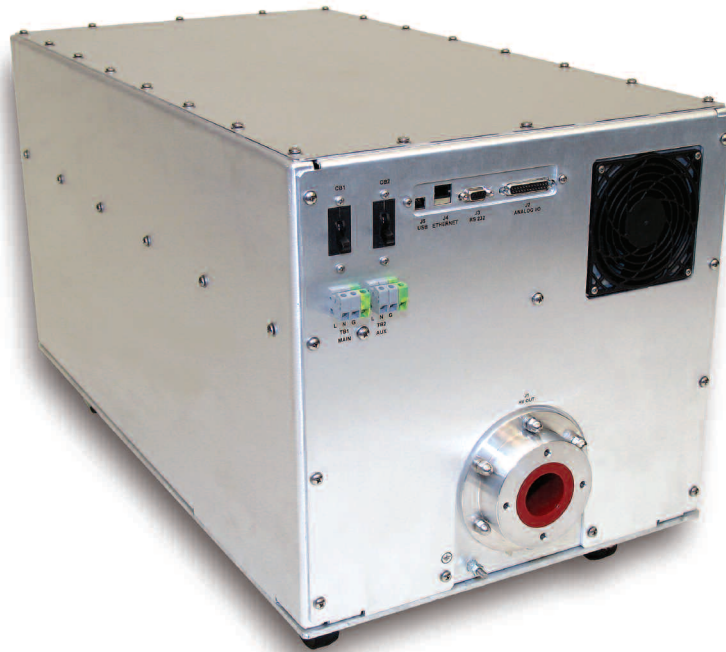
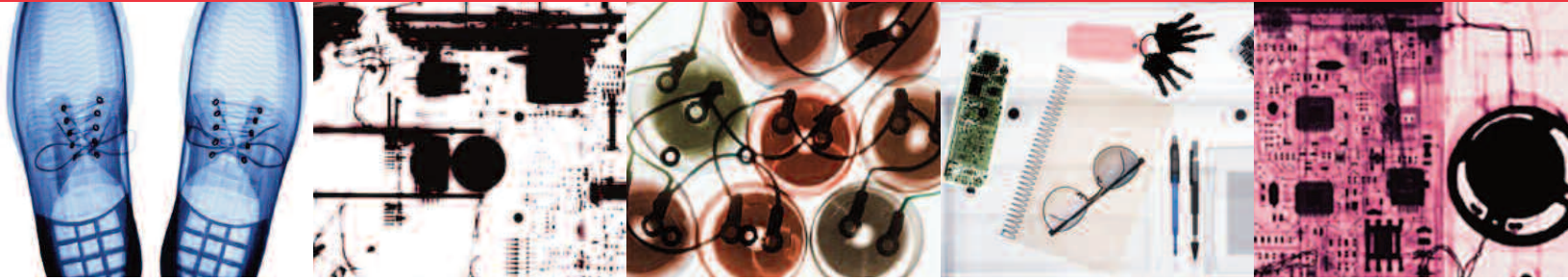


Performance + reliability + flexibility.  
It all adds up to power.



XRV Series  
X-Ray Generator





# XRV

## THE XRV SERIES 3.0KW - 4.5KW X-RAY GENERATORS

When it comes to dependable power for high resolution X-Ray inspection, Spellman High Voltage leads the way. No other manufacturer builds a more reliable, efficient, stable, or compact X-Ray Generator. Offering negative, positive or bipolar output ranging from 160kV to 450kV, Spellman can deliver an ideal solution for a wide variety of applications.

The X-Ray inspection industry demands greater performance, higher reliability, and increased flexibility. Spellman has responded with the compact, powerful, and reliable XRV Series. Consider the benefits of the groundbreaking XRV: Low ripple and active power factor correction result in reduced banding and higher

quality scans; An encapsulated high-voltage section cuts size and reduces weight, enabling the unit to operate oil-free and with little or no maintenance; An innovative, proprietary inverter topology allows for very high efficiency and power density, thus enhancing the overall performance of your equipment.



XRV450

### WHY THE SPELLMAN XRV SERIES?

#### IT ALL ADDS UP TO PERFORMANCE...

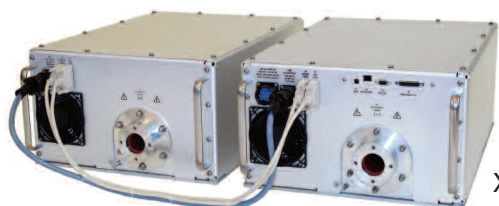
**Active PFC** - A wide input range minimizes the impact of poor mains quality on the scan.

**Low Ripple and High Stability** - Provides consistent output (kV & mA) for longer scans, reduces banding and improves data quality.

**Customizable Arc Management** - Arc detection in < 5uSec, plus integrated current limiting protects your tube. Response and recovery to arc events are fully customizable, allowing you to adjust the system to your specific testing requirements.

**Rise Time** - From zero to full kV, and settling to within 0.05% of setting within 300ms.

**Filamentary supply** - Integrated dual filament supplies provide accurate and stable tube currents.



XRV320

#### IT ALL ADDS UP TO RELIABILITY...

**Design Validation** - An MTBF of over 22,760 hours ensures long, trouble-free operation.

**Extensive Testing** - Environmental stress screening, electrical overstress (25% over V, I, W) extended arcing, HALT, EMC and UL compliance, testing conducted on X-Ray Tube loads, and beta testing in multiple applications, supports XRV's industry leading levels of reliability.

**Encapsulation** - The XRV's oil free design eliminates leaks and environmental concerns. The encapsulated dielectric high voltage section - made of our proprietary large-pour formulation - provides significantly higher strength than oil, is more forgiving of field stresses, and eliminates the maintenance and biohazards associated with oil tanks.

#### IT ALL ADDS UP TO FLEXIBILITY...

**Small Size & Lower Cost** - XRV Series models measure and weigh far less than their industry counterparts. Affordable pricing (and lower transport costs) allows you to pass savings onto your customers.

**Plug-n-Play Compatibility & Ease of Use** - XRV comes

with industry standard and custom digital and analog communications interfaces, including: RS232, USB; Ethernet (TCP/IP). An intuitive Windows-based GUI facilitates set-up, provides diagnostics and control of status, configuration and operation. The XRV Series is designed to work with industry-leading tubes.

**Serviceability** - The XRV Series has a unique modular design, with four Field-Replaceable Units (FRUs) that minimize MTTR, service inventory and overall repair cycle time. A troubleshooting tree and fault indicators simplify problem detection for faster, more accurate servicing. And, of course, Spellman's technical support is global, ensuring swift worldwide coverage.



XRV160

## APPLICATIONS

- NDT/Inspection
- Medical Sterilization/Irradiation
- Analytical X-RAY
- Medical X-RAY
- ATE
- Security Cargo Scanning
- Digital Radiography
- Industrial CT

- Highest Performance (ripple, stability, efficiency)
- Active PFC
- Digital & Analog Interface
- Compact 3.0 kW to 4.5 kW (Smallest and Lightest in the Industry)
- Output Voltage 160kV to 450kV (Negative or Bipolar)
- Oil-Free
- Cost Effective



XRV225

## SUPERIOR ENGINEERING

When compared head-to-head with other X-Ray inspection generators, Spellman XRV Series X-Ray generators lead the field in every significant way.

	SPELLMAN	COMPETITOR "A"	COMPETITOR "B"
<b>PERFORMANCE</b>			
Active Power Factor Correction	Yes	No	No
Ripple	0.05%	0.15%	0.10%
Stability	50ppm / C	100ppm	80ppm
Accuracy	+/- 0.25%	+/- 2.5%	+/- 1%
Efficiency	>93%	80%	>85%
Ambient Temp	0-50 C	10-35 C	0-40 C
<b>RELIABILITY</b>			
MTBF	22,760hrs	Not Published	Not Published
Dielectric	Silicone RTV	Oil	Oil
<b>FLEXIBILITY</b>			
Interface	Analog, RS-232, Ethernet and USB	Analog, RS-232	Analog, RS-232
Dimensions:			
160kV	10.5"H x 17"W x 24"D	28.7"H x 17.1"W x 26.3"D	26.9"H x 14.8"W x 24.6"D
225kV	16" H x 17" W x 31" D	31" H x 17" W x 32" D	28" H x 34" W x 49" D
Weight:			
160kV	150lbs	485lbs	176lbs
225kV	240lbs.	529lbs	374lbs

\* Spellman 320kV & 450kV models are 2 x 160 & 225kV packages respectively



**Spellman USA and Corporate HQ**

475 Wireless Blvd.  
Hauppauge, NY 11788  
United States  
tel: +1-631-630-3000  
fax: +1-631-435-1620

**Spellman Valhalla NY USA**

One Commerce Park  
Valhalla, NY 10595  
United States  
tel: +1-914-686-3600  
fax: +1-914-686-5424

**Spellman Bohemia NY USA**

30 Crossways East  
Bohemia, NY 11716  
United States

**Spellman UK**

Broomers Hill Park #14, Broomers Hill  
Pulborough, West Sussex,  
United Kingdom RH20 2RY  
tel: +44 (0) 1798 877000  
fax: +44 (0) 1798 872479

**Spellman Japan**

4-3-1 Kamitoda,  
Toda-shi, Saitama-ken,  
Japan 335-0022  
tel: +81(0) 48-447-6500  
fax: +81(0) 48-447-6501

**Spellman China**

Spellman High Voltage Electronics (SIP) Co Ltd.  
No. 5 Xinghan Street, Block A #2-03/08  
Suzhou Industrial Park, China 215021  
tel: +(86)-512-67630010  
fax: +(86)-512-67630030

**Spellman de Mexico SA de CV**

Diagonal Lorenzo de la Garza # 65  
Cd. Industrial  
H. Matamoros, Tamps CP 87494  
Mexico  
tel: +52 868 150-1200  
fax: +52 868 150-1218



[www.spellmanhv.com](http://www.spellmanhv.com)  
e-mail: [sales@spellmanhv.com](mailto:sales@spellmanhv.com)

For more detailed information on the XRV Series,  
please visit [www.spellmanhv.com/xrv](http://www.spellmanhv.com/xrv)